

Tatami Sheet

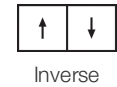
Collection	Terasu	
Numéro De Style	0796V	
Référence De La Baguette De Soudure	353VS	
Construction	Rouleau Hétérogène Commerciale	
classe	Type I, Grade 1, Class B	
Classe d'Endos	Endos fusionné à 4 plis	
Finition	ExoGuard®	
	Impérial	Métrique
Épaisseur De La Couche d'Usure	20 mil (0.02 in)	0.51 mm
Épaisseur Générale Du Produit	0.087 in	2.2 mm
Installation Type	Dry Back	
Adhésif Recommandé	S150-95 Resilient Tile Spray, 4200 Resilient Sheet 1 Gallon, 4200 Resilient Sheet 4 Gallon, 2200 Resilient Tile 4 Gallon or 4151 Multi-Use Premium 4 Gallon	



Emballage

Dimensions Réelles Du Rouleau	6.56 ft w x 68.58 ft l	2.00 m w x 20.90 m l
Surface Par Rouleau	50.75 sy/roll	42.43 sq m/roll
Poids Par Rouleau	337.7 lbs	153.18 kg

Méthodes d'Installation Conseillées



Coordination Des Produits

LVT: Terrace 2.5 Mm, Terrace 5.0 Mm
Sheet: Reed Sheet, Roji Sheet
Carpet Tile: Botan Tile, Hana Tile, Kusa Tile
Broadloom: Botan, Hana, Kusa

Performance + Tests Et Essai

Poinçonnement Rémanent (Astm F1914)	Passes
Souplesse (Astm F137)	Passes
Résistance À La Chaleur (Astm F1514)	Passes
Résistance À La Lumière (Astm F1515)	Passes
Résistance Chimique (Astm F925)	Passes
Coefficient De Frottement (Astm D2407, Résistance Au Glissement)	>0.6, meets the recommended static coefficient of friction for ADA walking surfaces and accessible routes

Test Reports may be included or listed by the manufacturing/inventory style number as opposed to the noted selling style number.

Garanties

[Limitée Commerciale De 15 Ans](#)
[Commercial 15 Year Underbed Bond Warranty](#)

Diversity, Equity & Inclusion

We believe all humans are equal. Individually and collectively, we need to proactively create and promote opportunities that give everybody an equal footing in life. We nurture an environment where every voice and perspective can be heard, and proactively promote accessibility and inclusivity inside our network and beyond. One proof point is our ability to meet the criteria of the Social Fairness pillar of the Cradle to Cradle Product Standard. At Shaw Industries, we promote supplier participation that is reflective of Shaw's diverse customer base and local community. More than 42% of our spend***** is with small and diverse businesses. We believe having a strong Supplier Diversity Program is strategic for bringing more innovation to our businesses and openingnew markets for growth.

Attributs + Certifications

Climate Impact

Environmental Product Declaration (EPD)

Total Recycled Content

[Certifié Par Une Tierce Partie Conformément Aux Normes ISO 14025, EN 15804 Et ISO 21930:2017](#)
0% (Pre-Consumer 0% | Post-Consumer 0%)

Global Product Assessment

[FloorScore® | Agréé](#)
CE Marking (EN 14041) | Certifié Par Un Tiers
Country of Origin | Imported

Contribution Au Certificat Vert Leed

« Crédit MR : Divulgation et optimisation des produits de construction

Crédit EQ : matériaux faibles émissions

[Installation Guidelines](#)
[Maintenance Guidelines](#)

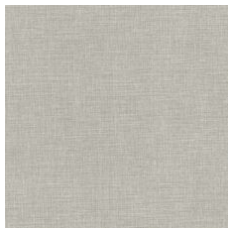
3rd Party Certified in Accordance with ISO 14025, EN 15804, & ISO 21930:2017
FloorScore Certified

Please visit www.shawcontract.com for the most current warranty information.
Specifications are subject to nominal manufacturing variance. Material supply and/or manufacturing processes may necessitate changes without notice.

This product is an exclusive design and may not be duplicated in any manner. Use of this design in the creation of another product design is also strictly prohibited.
*****Allowable spend is domestic (US) spend in categories in which we have diverse suppliers from which to choose. Compared to non-allowable spend which includes categories in which we do not have domestic, small or diverse suppliers available to meet our needs.

Visit shawcontract.com/testing for more information.

Available Colorways



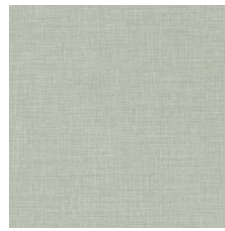
Pebble 96114
Weldrod 07332



Evening Glow 96130
Weldrod 07331



Tea Garden 96216
Weldrod 07332



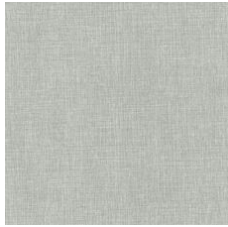
Moss 96330
Weldrod 07332



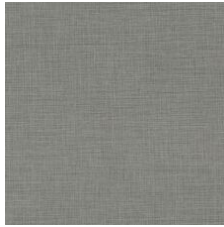
Cascade 96416
Weldrod 05008



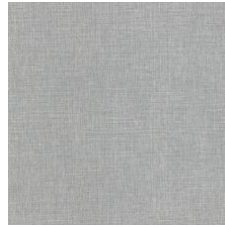
Tidal Basin 96440
Weldrod 02003



Zen 96515
Weldrod 01203



Wind Chime 96530
Weldrod 01225



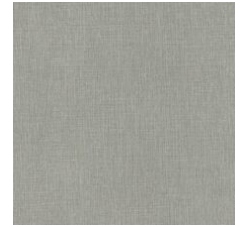
Stroll 96535
Weldrod 01203



Stepping Stone 96700
Weldrod 02019



Pagoda 96710
Weldrod 05244



Shakkei 96761
Weldrod 02001



Corporate Headquarters +1 800 257 7429 | +1 706 532 7984 | Atlanta +1 404 853 7429 | Bengaluru +91 80 6773 0202 | Beijing +86 10 6568 588 | Chicago +1 312 467 1331 | Dubai +971 4 584 6956 | Hong Kong +852 2623 0371 | Latin America (Miami) +1 305 827 5912 | London +44 207 961 4120 | Los Angeles +1 800 233 1614 | Melbourne +61 3 9939 8543 | Mexico City +55 5010 7600 | Mumbai +91 22 6284 5050 | Nantong +86 400 800 7429 | New York +1 212 953 7429 | Paris +33 (0) 1 81 22 44 39 | San Francisco +1 415 955 1920 | Santiago +562 2431 5000 x 550 | São Paulo +55 11 3071 1702 | Shanghai +86 21 3338 4000 | Singapore +65 6733 1811 | Sydney +1 800 556 302